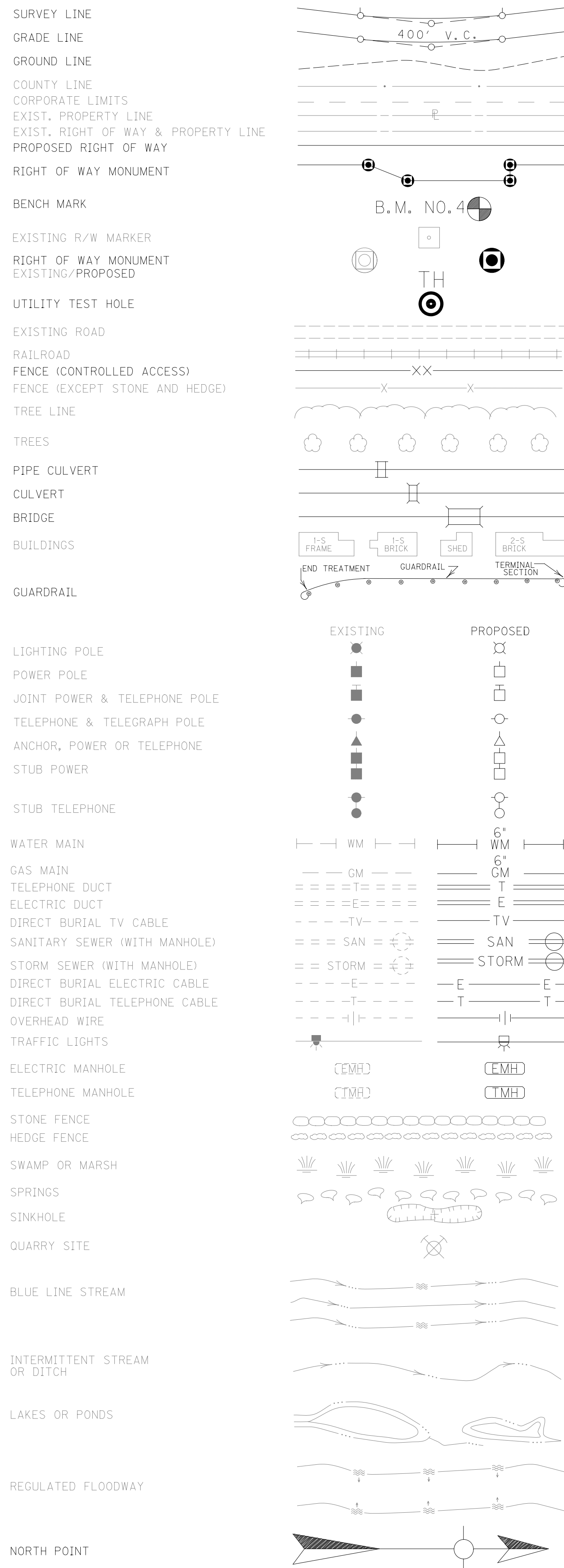


COUNTY OF	ITEM NO.	SHEET NO.
MAGOFFIN	10-0140	

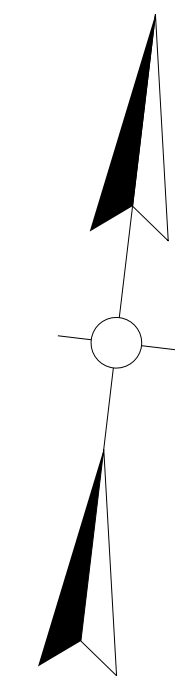
CONVENTIONAL SIGNS



P
5

F S MARTIN EST
C/O PHYLLIS KARANICOLAS

STA 3840+00
BEG MEDIAN FILL
LT&RT STA 3840+00
BEG PAINTED LINE LANE TAPER
BEG PAINTED LINE MEDIAN TAPER



CURVE DATA
P. I. 3837+14.63
 $\Delta = 32^\circ 42' 02" \text{ Lt.}$
 $C = 6^\circ 32' 53"$
 $T = 256.70$
 $L = 499.39$
 $R = 875$
 $E = 36.88$
 $e = 7.2\%$
Runoff = 270
Runout = 75

P
6

CLAY & GOLDIA PRATER
C/O MARY EMMA CONNELLEY

Electric:
Kentucky Power Company (A.E.P.)
Ronald Canfield
12333 Kevin Ave.
Ashland, KY 41102
606-929-1462

Telephone:
Foothills Rural Telephone
Tom Preston
P.O. Box 240
Staffordsville, KY 41256
606-297-3501

Water:
Magoffin County Water District
Jim Hoskins
P.O. Box 47
Salyersville, KY 41465-0047
606-349-6818

Television:
Rick Howard TV Cable
Rick Howard
P.O. Box 330 (Route 40)
Salyersville, KY 41465
606-349-3317

Gas:
Sigma Gas Company
Estill Branham
P.O. Box 22
Salyersville, KY 41465
606-349-1505

B.T.U. Pipeline
Richard Williams
606-884-2000

CAUTION CAUTION CAUTION
THE CONTRACTOR IS ADVISED TO EXERCISE
CAUTION IN HIS OPERATIONS IN AREAS WHERE
PLANS INDICATE THE PRESENCE OF A GAS LINE
OR OTHER LINE CARRYING HAZARDOUS MATERIAL.
CAUTION CAUTION CAUTION

BEFORE YOU DIG

The contractor is instructed to call 1-800-752-6007 to reach KY 811, the one-call system for information on the location of existing underground utilities. The call is to be placed a minimum of two (2) and no more than ten (10) business days prior to excavation. The contractor should be aware that owners of underground facilities are not required to be members of the KY 811 one-call Before-U-Dig (BUD) service. The contractor must coordinate excavation with the utility owners, including those whom do not subscribe to KY 811. It may be necessary for the contractor to contact the County Court Clerk to determine what utility companies have facilities in the area.

SCALE: 1"=50'

DESIGNED BY: **Vaughn & Melton**
DATE SUBMITTED:

Commonwealth of Kentucky
DEPARTMENT OF HIGHWAYS
COUNTY OF
MAGOFFIN
MOUNTAIN PARKWAY

PROJECT _____
NUMBERS: _____

MOUNTAIN PARKWAY
PLAN STA 3840+00 TO STA 3845+00

FILE NAME: M:\TRANSPORTATION\10130-01 MOUNTAIN PKWY FRU BKUP\PLANS\PLN1.DGN

USER: frjohnson
DATE PLOTTED: February 20, 2013

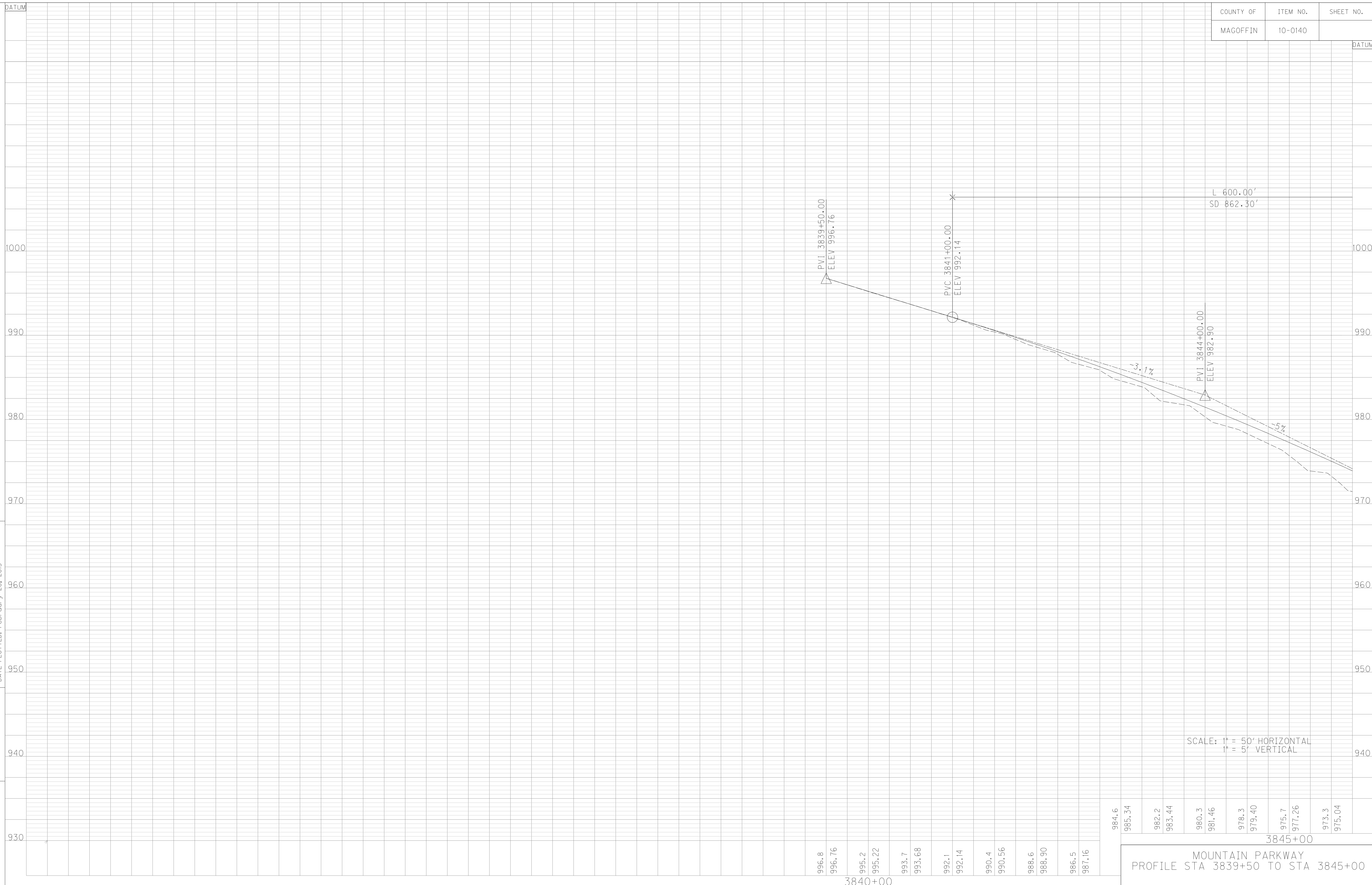
E-SHEET NAME:

MicroStation v8.11.7.180

COUNTY OF	ITEM NO.	SHEET NO.
MAGOFFIN	10-0140	

DATUM

MicroStation v8.11.7.180
 E-SHEET NAME:
 USER: frjohnson
 DATE PLOTTED: February 20, 2013
 FILE NAME: M:\TRANSPORTATION\1030-01 MOUNTAIN PKWY FRJ BKUP\PLANS\PROJ.DGN



SCALE: 1" = 50' HORIZONTAL
 1" = 5' VERTICAL

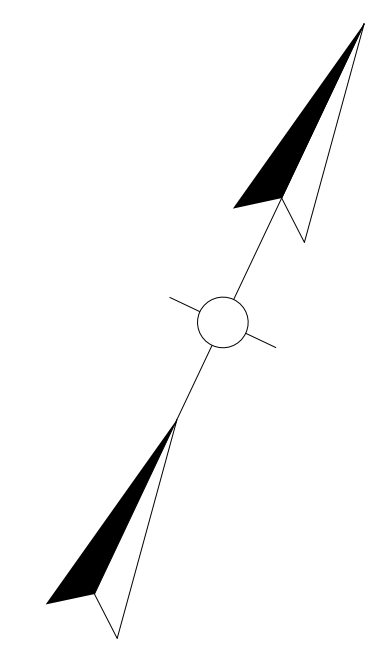
3845+00
 MOUNTAIN PARKWAY
 PROFILE STA 3839+50 TO STA 3845+00

996.8
996.76
995.2
995.22
993.7
993.68
992.1
992.14
990.4
990.56
988.6
988.90
986.5
987.16

984.6
995.34
982.2
983.44
980.3
981.46
978.3
979.40
975.7
977.26
973.3
975.04

COUNTY OF	ITEM NO.	SHEET NO.
MAGOFFIN	10-0140	

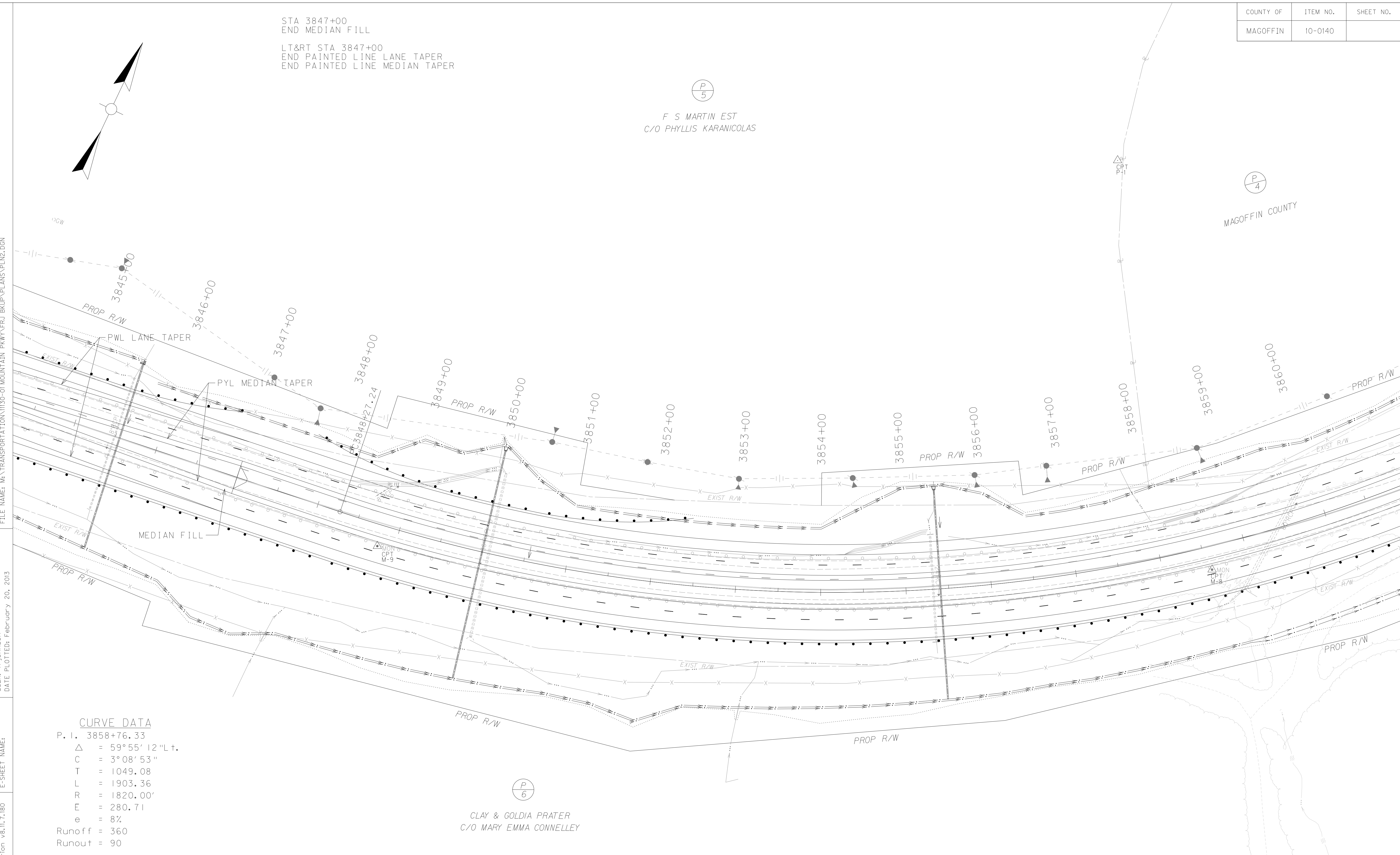
STA 3847+00
 END MEDIAN FILL
 LT&RT STA 3847+00
 END PAINTED LINE LANE TAPER
 END PAINTED LINE MEDIAN TAPER



(P/5)
 F S MARTIN EST
 C/O PHYLLIS KARANICOLAS

(P/4)
 MAGOFFIN COUNTY

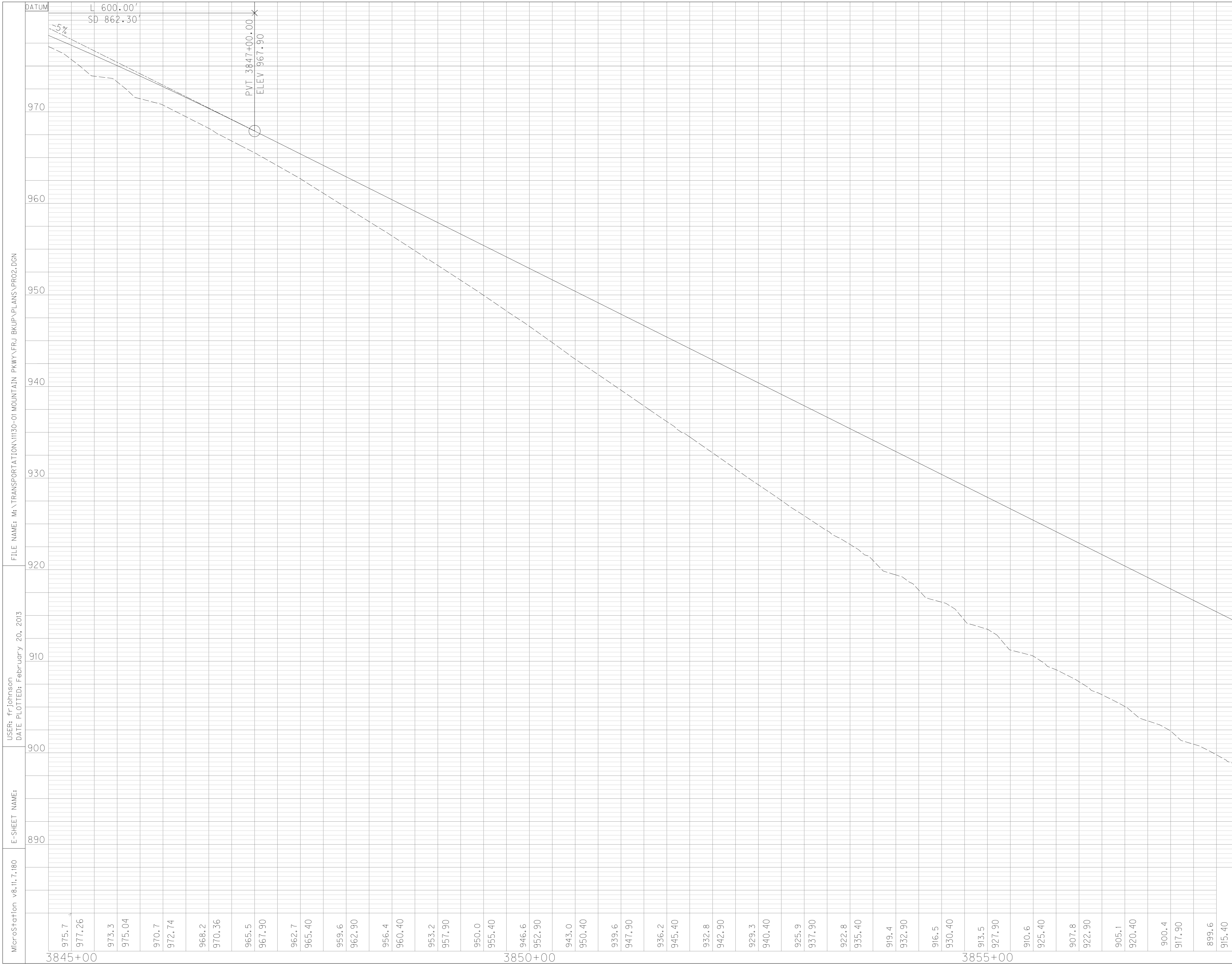
FILE NAME: M:\TRANSPORTATION\10130-01 MOUNTAIN PKWY FRJ BKUP\PLANS\PLN2.DGN
 USER: frjohnson
 DATE PLOTTED: February 20, 2013
 E-SHEET NAME:
 MicroStation v8.11.7.180



CURVE DATA
 P. I. 3858+76.33
 Δ = 59°55'12" L t.
 C = 3°08'53"
 T = 1049.08
 L = 1903.36
 R = 1820.00'
 E = 280.71
 e = 8%
 Runoff = 360
 Runout = 90

(P/6)
 CLAY & GOLDIA PRATER
 C/O MARY EMMA CONNELLEY

COUNTY OF	ITEM NO.	SHEET NO.
MAGOFFIN	10-0140	



Station	Elevation
3845+00	975.7
3845+10	977.26
3845+20	973.3
3845+30	975.04
3845+40	970.7
3845+50	972.74
3845+60	968.2
3845+70	970.36
3845+80	965.5
3845+90	967.90
3846+00	962.7
3846+10	965.40
3846+20	959.6
3846+30	962.90
3846+40	956.4
3846+50	960.40
3846+60	953.2
3846+70	957.90
3846+80	950.0
3846+90	955.40
3847+00	946.6
3847+10	952.90
3847+20	943.0
3847+30	950.40
3847+40	939.6
3847+50	947.90
3847+60	936.2
3847+70	945.40
3847+80	932.8
3847+90	942.90
3848+00	929.3
3848+10	940.40
3848+20	925.9
3848+30	937.90
3848+40	922.8
3848+50	935.40
3848+60	919.4
3848+70	932.90
3848+80	916.5
3848+90	930.40
3849+00	913.5
3849+10	927.90
3849+20	910.6
3849+30	925.40
3849+40	907.8
3849+50	922.90
3849+60	905.1
3849+70	920.40
3849+80	900.4
3849+90	917.90
3850+00	899.6
3850+10	915.40
3850+20	897.3
3850+30	912.90
3850+40	894.9
3850+50	910.40
3850+60	892.6
3850+70	907.90
3850+80	890.0
3850+90	905.40
3851+00	887.9
3851+10	902.90
3851+20	885.8
3851+30	900.41

SCALE: 1" = 50' HORIZONTAL
 1" = 5' VERTICAL
 MOUNTAIN PARKWAY
 PROFILE STA 3845+00 TO STA 3860+00

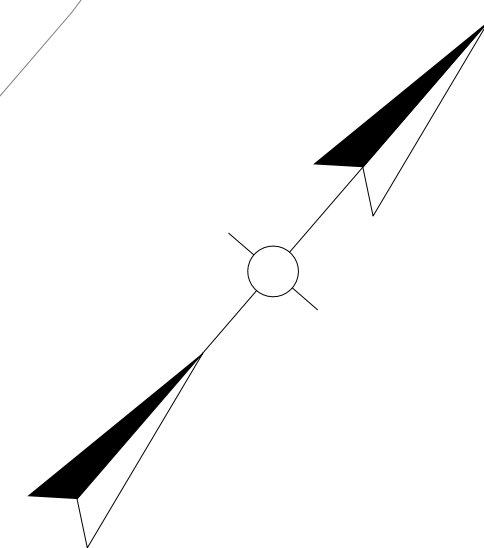
FILE NAME: M:\TRANSPORTATION\1030-01 MOUNTAIN PKWY FRJ BKUP\PLANS\PROJ.DGN

USER: frjohnson
DATE PLOTTED: February 20, 2013

E-SHEET NAME:

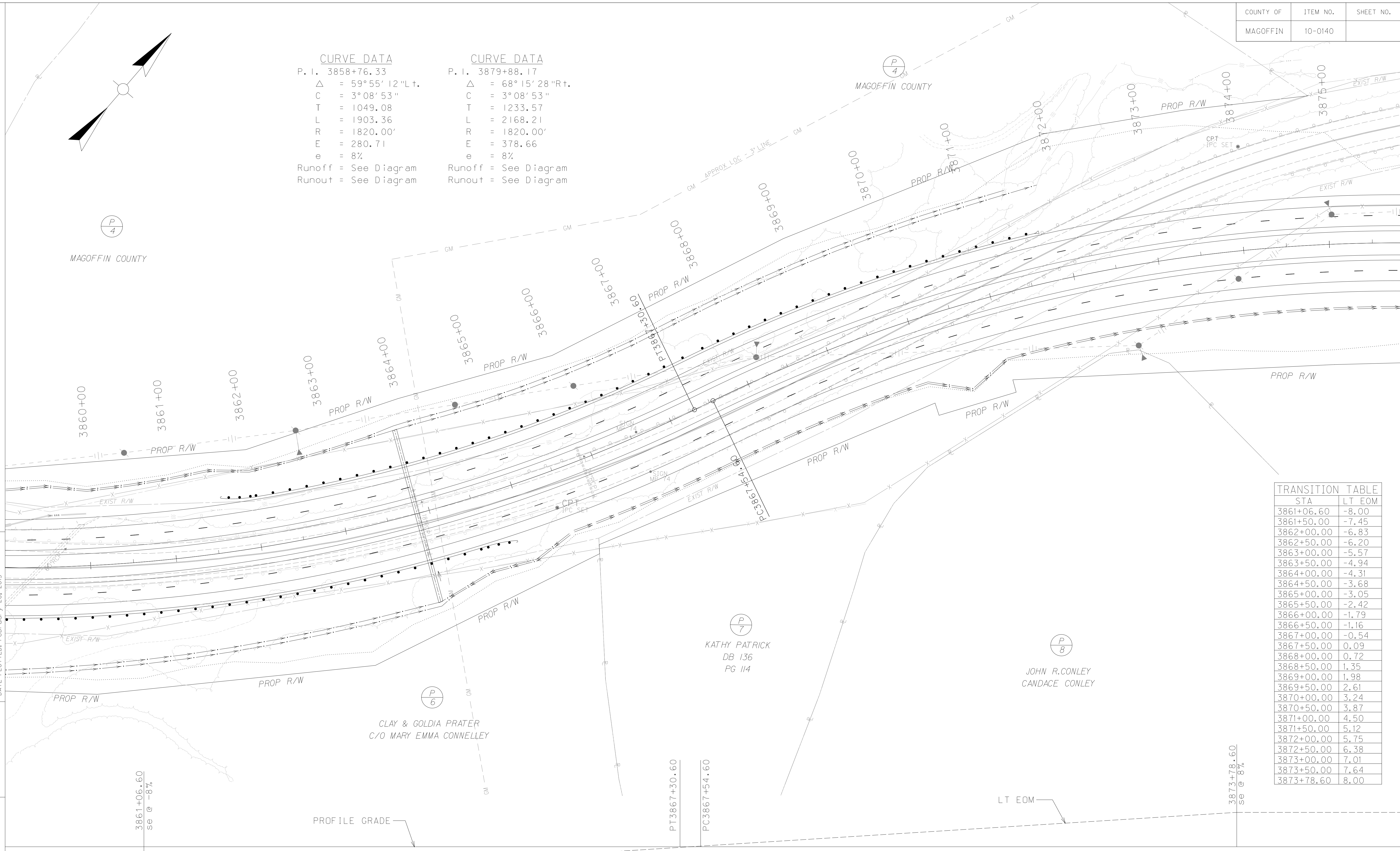
MicroStation v8.11.7.180

COUNTY OF	ITEM NO.	SHEET NO.
MAGOFFIN	10-0140	



CURVE DATA		CURVE DATA	
P. I.	3858+76.33	P. I.	3879+88.17
Δ	= 59°55' 12" Lt.	Δ	= 68°15' 28" Rt.
C	= 3°08' 53"	C	= 3°08' 53"
T	= 1049.08	T	= 1233.57
L	= 1903.36	L	= 2168.21
R	= 1820.00'	R	= 1820.00'
E	= 280.71	E	= 378.66
e	= 8%	e	= 8%
Runoff	= See Diagram	Runoff	= See Diagram
Runout	= See Diagram	Runout	= See Diagram

FILE NAME: M:\TRANSPORTATION\1130-01 MOUNTAIN PKWY FRJ BKUP\PLANS\PLN3.DGN
 USER: frjohnson
 DATE PLOTTED: February 20, 2013
 E-SHEET NAME:
 MicroStation v8.11.7.180



TRANSITION TABLE	
STA	LT EOM
3861+06.60	-8.00
3861+50.00	-7.45
3862+00.00	-6.83
3862+50.00	-6.20
3863+00.00	-5.57
3863+50.00	-4.94
3864+00.00	-4.31
3864+50.00	-3.68
3865+00.00	-3.05
3865+50.00	-2.42
3866+00.00	-1.79
3866+50.00	-1.16
3867+00.00	-0.54
3867+50.00	0.09
3868+00.00	0.72
3868+50.00	1.35
3869+00.00	1.98
3869+50.00	2.61
3870+00.00	3.24
3870+50.00	3.87
3871+00.00	4.50
3871+50.00	5.12
3872+00.00	5.75
3872+50.00	6.38
3873+00.00	7.01
3873+50.00	7.64
3873+78.60	8.00

3861+06.60
se @ -8%

PROFILE GRADE

CLAY & GOLDIA PRATER
C/O MARY EMMA CONNELLEY

KATHY PATRICK
DB 136
PG 114

JOHN R. CONLEY
CANDACE CONLEY

SUPERELEVATION TRANSITION DIAGRAM

SCALE: 1"=50'

MOUNTAIN PARKWAY
PLAN STA 3860+00 TO STA 3875+00

COUNTY OF	ITEM NO.	SHEET NO.
MAGOFFIN	10-0140	



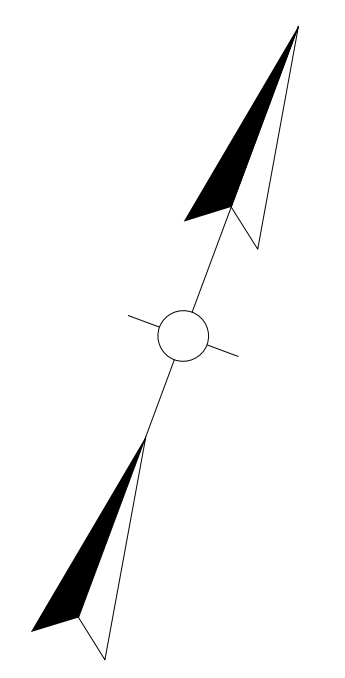
COUNTY OF	ITEM NO.	SHEET NO.
MAGOFFIN	10-0140	

LT&RT STA 3884+79.46
 BEG 35:1 MEDIAN TAPER

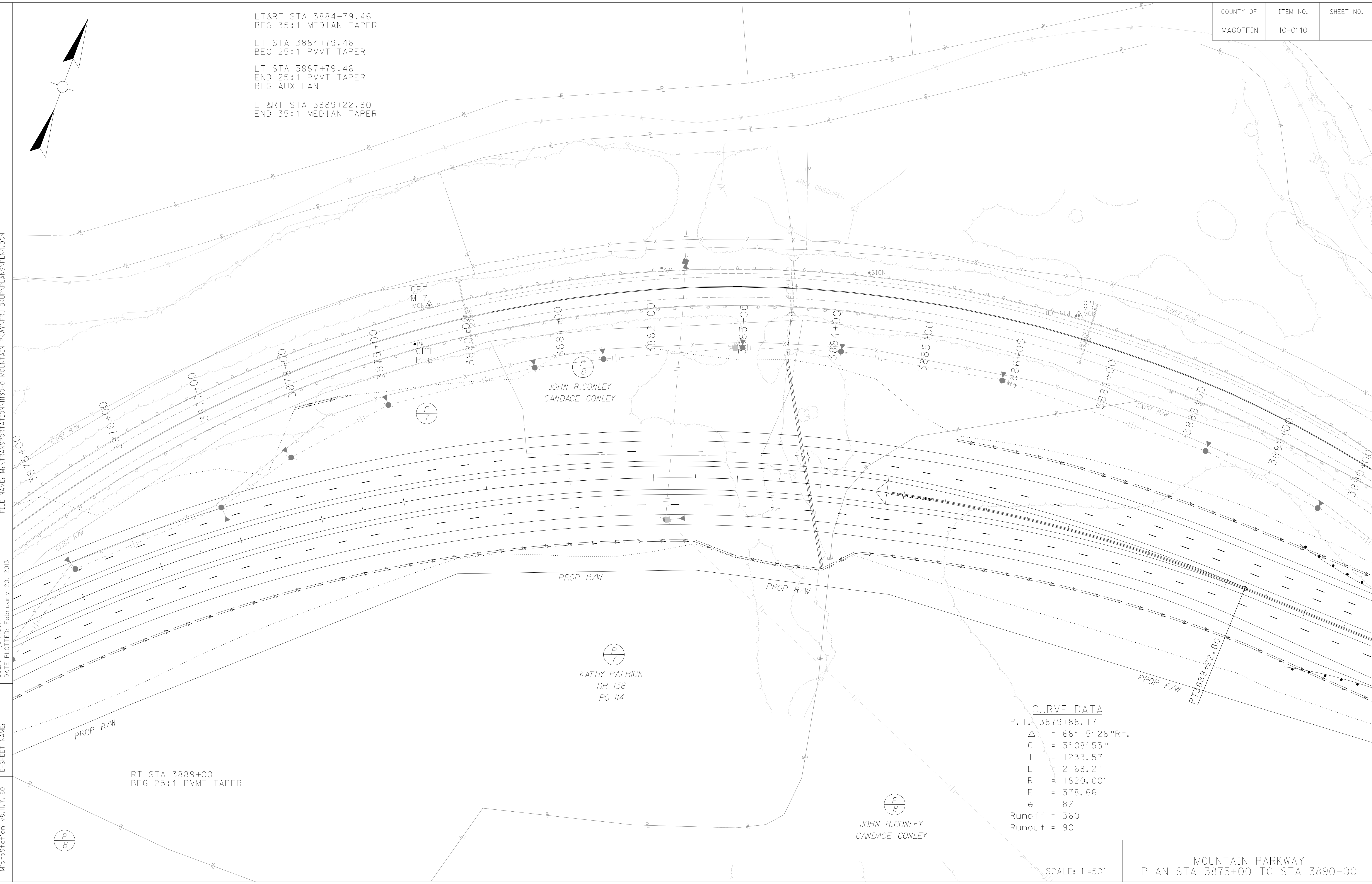
LT STA 3884+79.46
 BEG 25:1 PVMT TAPER

LT STA 3887+79.46
 END 25:1 PVMT TAPER
 BEG AUX LANE

LT&RT STA 3889+22.80
 END 35:1 MEDIAN TAPER



FILE NAME: M:\TRANSPORTATION\10130-01 MOUNTAIN PKWY FRJ BKUP\PLANS\PLM4.DGN
 USER: frjohnson
 DATE PLOTTED: February, 20, 2013
 E-SHEET NAME:
 MicroStation v8.11.7.180



CURVE DATA

P. I. 3879+88.17

Δ = 68° 15' 28" Rt.

C = 3° 08' 53"

T = 1233.57

L = 2168.21

R = 1820.00'

E = 378.66

e = 8%

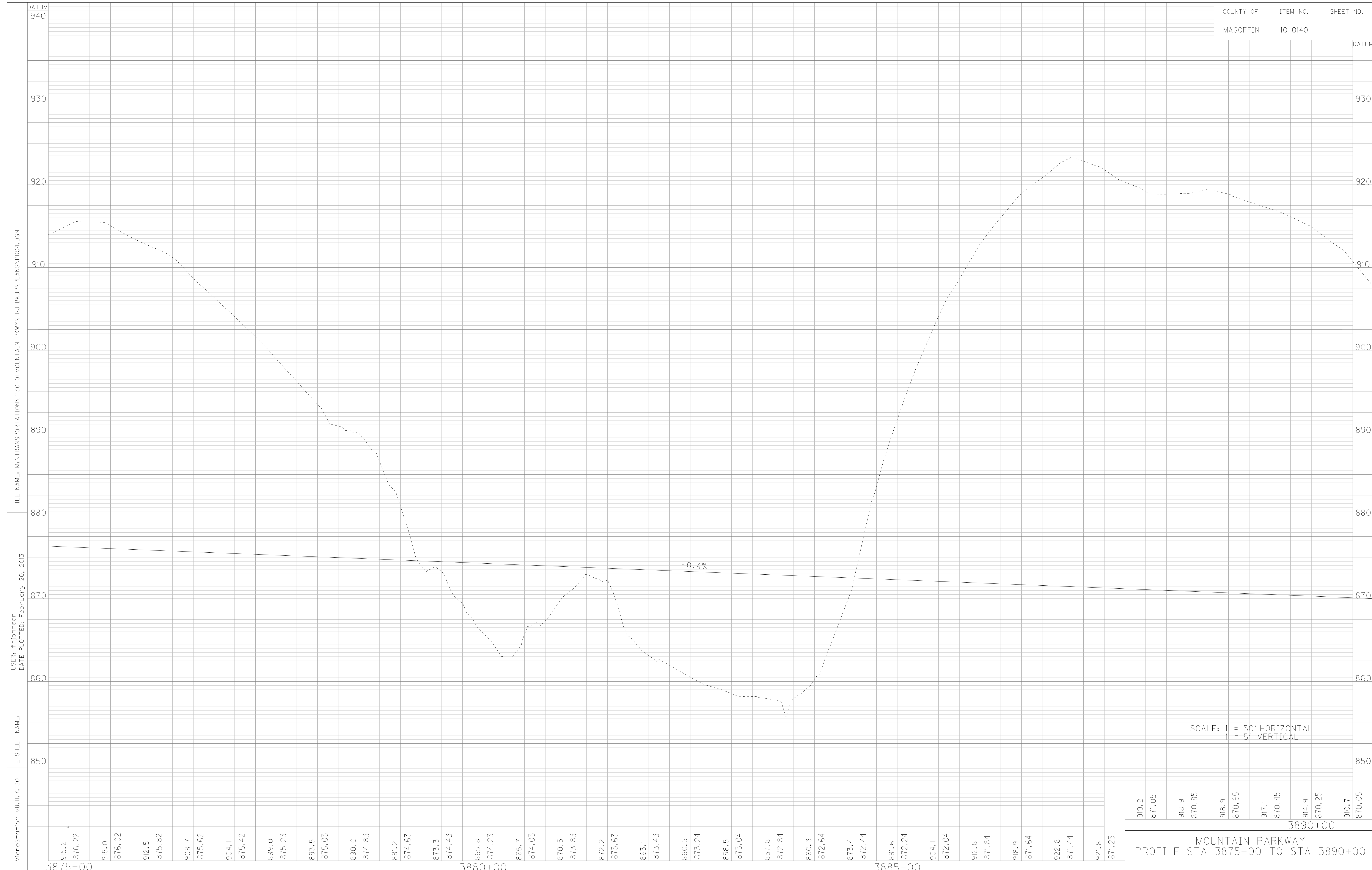
Runoff = 360

Runout = 90

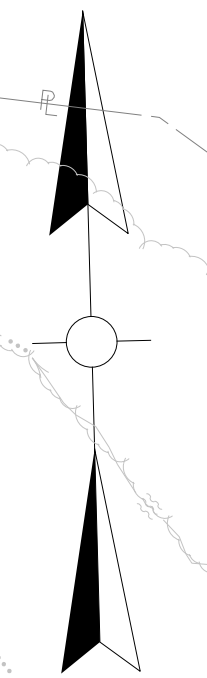
RT STA 3889+00
 BEG 25:1 PVMT TAPER

SCALE: 1"=50'

COUNTY OF	ITEM NO.	SHEET NO.
MAGOFFIN	10-0140	



COUNTY OF	ITEM NO.	SHEET NO.
MAGOFFIN	10-0140	



CURVE DATA
P.I. 3914+71.12
 $\Delta = 66^{\circ}03'06''$ Lt.
C = 2°29'28"
T = 1495
L = 2651.49
R = 2300.00
E = 443.24
e = 7.4%
Runoff = 333
Runout = 90

LT STA 3898+00.60
END AUX LANE
BEG RAMP A

CURVE DATA - RAMP A
P.I. 46+91.43
 $\Delta = 44^{\circ}58'19''$ Lt.
C = 7°32'20"
T = 314.59
L = 596.53
R = 760
E = 62.54
e = 2%
Runoff = SEE DIAGRAM
Runout = SEE DIAGRAM

CURVE DATA - RAMP B
P.I. 51+69.02
 $\Delta = 37^{\circ}16'37''$ Rt.
C = 20°50'05"
T = 92.75
L = 178.92
R = 275
E = 15.22
e = 2%
Runoff = SEE DIAGRAM
Runout = SEE DIAGRAM

FILE NAME: M:\TRANSPORTATION\1030-01 MOUNTAIN PKWY FRJ BKUP\PLANS\PLN5.DGN
USER: frjohnson
DATE PLOTTED: February 20, 2013
E-SHEET NAME:
MicroStation v8.11.7.180

CURVE DATA - RAMP C
P.I. 39+84.12
 $\Delta = 48^{\circ}05'42''$ Rt.
C = 7°32'20"
T = 339.13
L = 637.96
R = 760
E = 72.23
e = 8%
Runoff = SEE DIAGRAM
Runout = SEE DIAGRAM

CURVE DATA - RAMP C
P.I. 43+83.33
 $\Delta = 35^{\circ}39'34''$ Lt.
C = 24°54'40"
T = 73.98
L = 143.15
R = 230
E = 11.60
e = 8%
Runoff = SEE DIAGRAM
Runout = SEE DIAGRAM

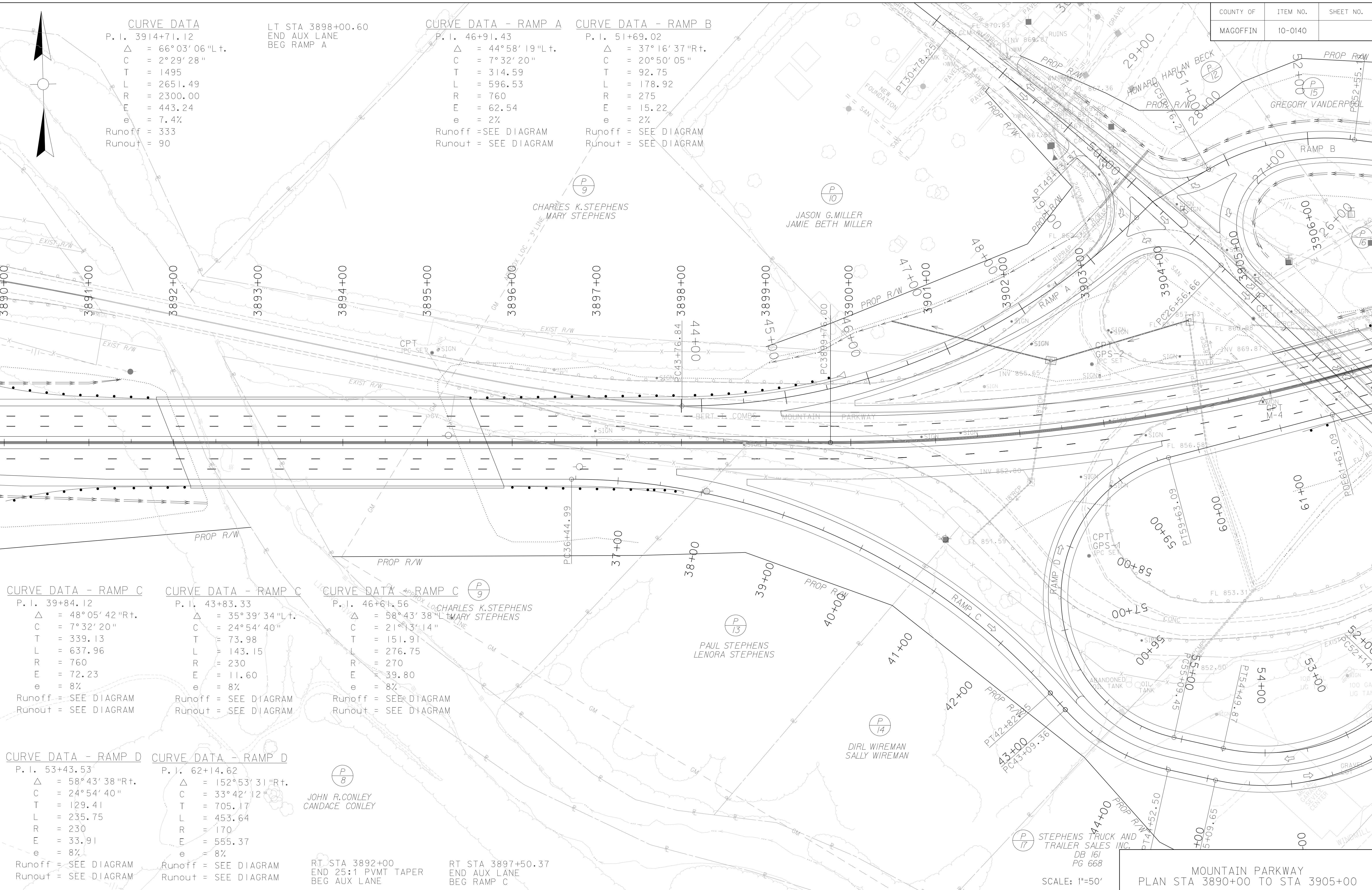
CURVE DATA - RAMP C
P.I. 46+61.56
 $\Delta = 58^{\circ}43'38''$ Lt.
C = 21°13'14"
T = 151.91
L = 276.75
R = 270
E = 39.80
e = 8%
Runoff = SEE DIAGRAM
Runout = SEE DIAGRAM

CURVE DATA - RAMP D
P.I. 53+43.53
 $\Delta = 58^{\circ}43'38''$ Rt.
C = 24°54'40"
T = 129.41
L = 235.75
R = 230
E = 33.91
e = 8%
Runoff = SEE DIAGRAM
Runout = SEE DIAGRAM

CURVE DATA - RAMP D
P.I. 62+14.62
 $\Delta = 152^{\circ}53'31''$ Rt.
C = 33°42'12"
T = 705.17
L = 453.64
R = 170
E = 555.37
e = 8%
Runoff = SEE DIAGRAM
Runout = SEE DIAGRAM

RT STA 3892+00
END 25:1 PVMT TAPER
BEG AUX LANE

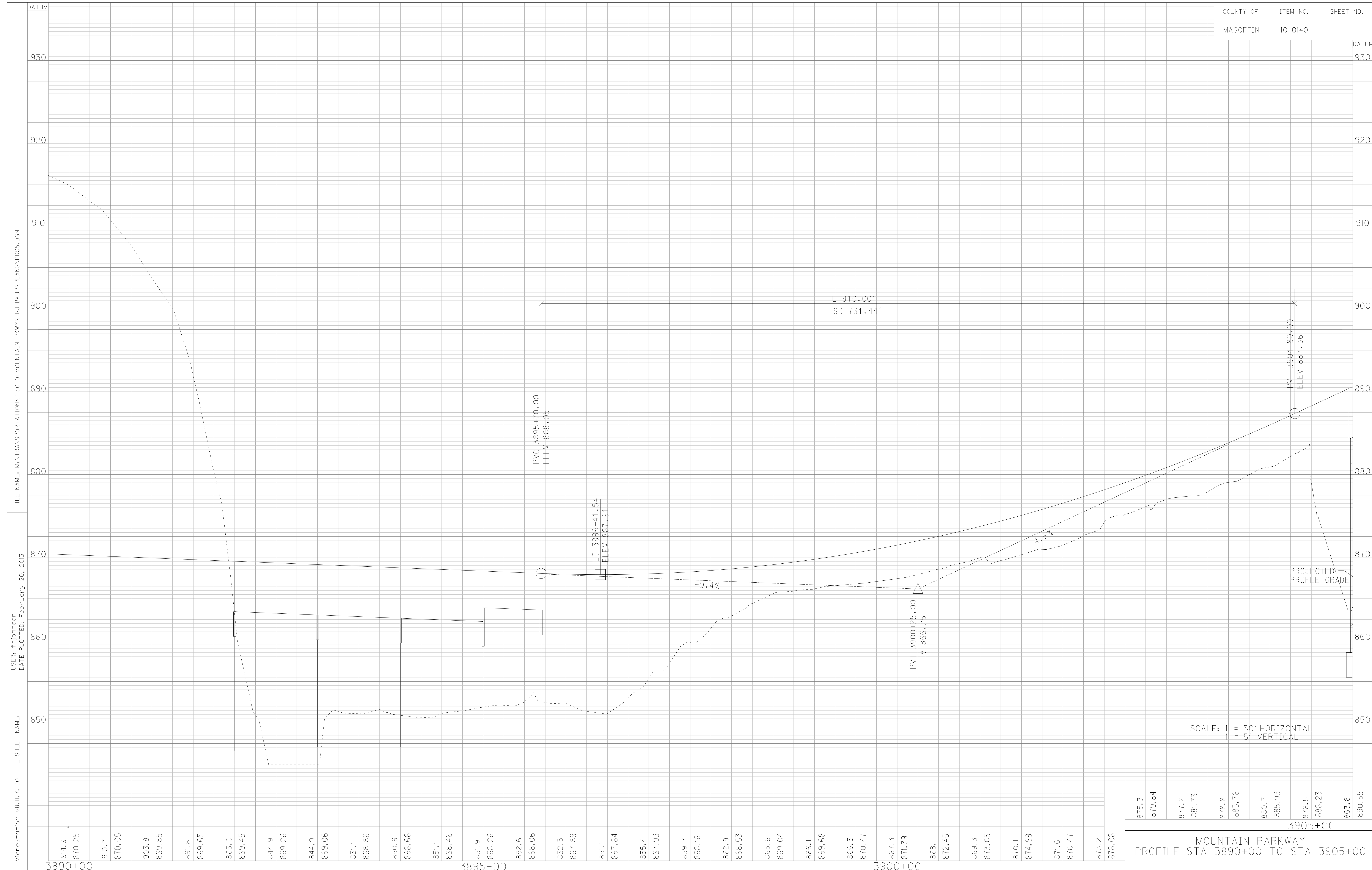
RT STA 3897+50.37
END AUX LANE
BEG RAMP C



SCALE: 1"=50'

MOUNTAIN PARKWAY
PLAN STA 3890+00 TO STA 3905+00

COUNTY OF	ITEM NO.	SHEET NO.
MAGOFFIN	10-0140	



COUNTY OF	ITEM NO.	SHEET NO.
MAGOFFIN	10-0140	

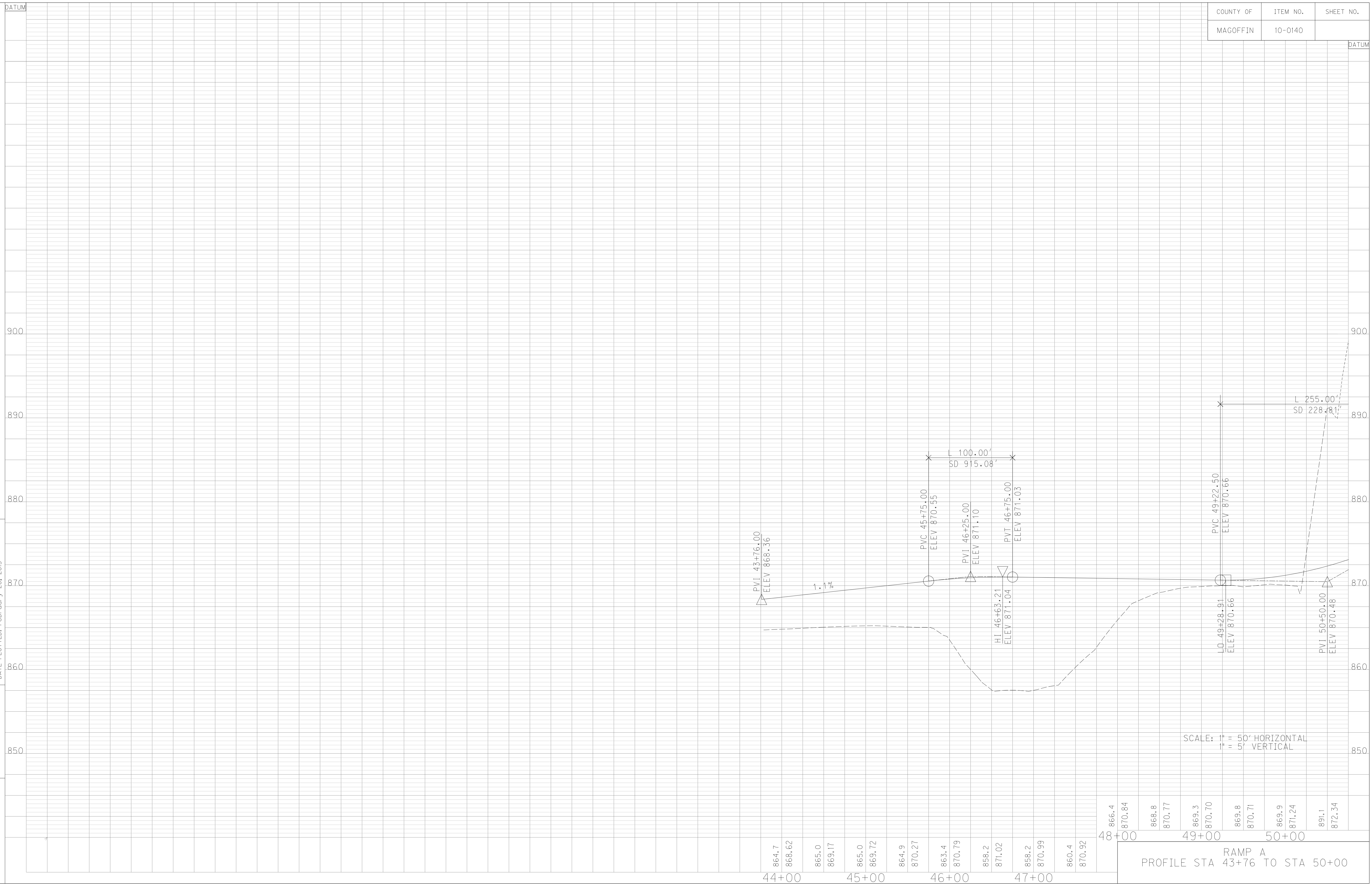
DATUM

FILE NAME: M:\TRANSPORTATION\1030-01 MOUNTAIN PKWY FRJ BKUP\PLANS\RAMP_A_PR.DGN

USER: frjohnson
DATE PLOTTED: February 20, 2013

E-SHEET NAME:

MicroStation v8.11.7.180



RAMP A
PROFILE STA 43+76 TO STA 50+00

COUNTY OF	ITEM NO.	SHEET NO.
MAGOFFIN	10-0140	

CURVE DATA - RAMP B

P. I. 51+69.02
 Δ = 37°16'37"Rt.
 C = 20°50'05"
 T = 92.75
 L = 178.92
 R = 275
 E = 15.22
 e = 2%
 Runoff = SEE DIAGRAM
 Runout = SEE DIAGRAM

CURVE DATA - RAMP B

P. I. 56+91.30
 Δ = 44°26'29"Lt.
 C = 7°32'20"
 T = 310.47
 L = 589.49
 R = 760
 E = 60.97
 e = 2%
 Runoff = SEE DIAGRAM
 Runout = SEE DIAGRAM

CURVE DATA

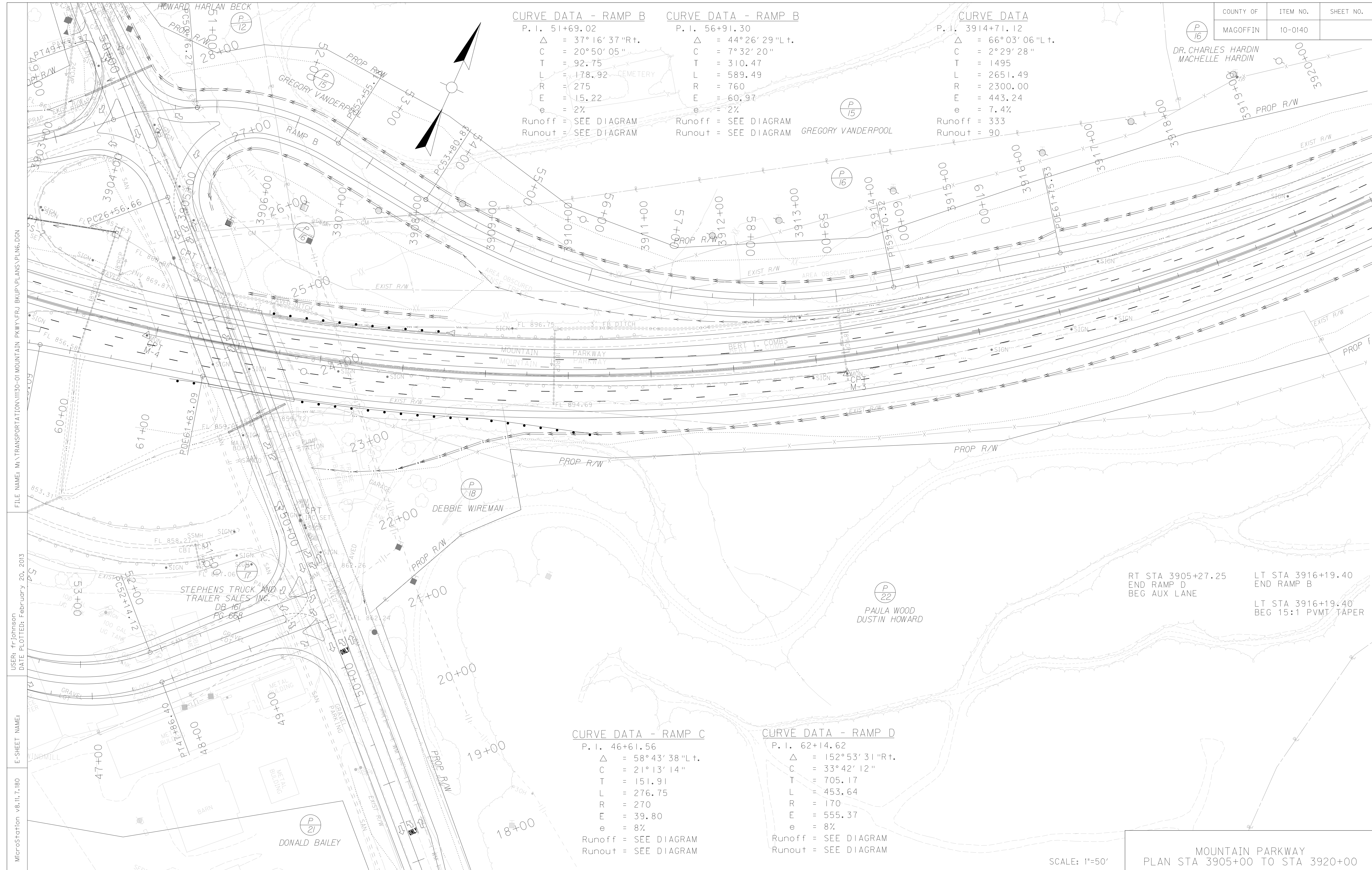
P. I. 3914+71.12
 Δ = 66°03'06"Lt.
 C = 2°29'28"
 T = 1495
 L = 2651.49
 R = 2300.00
 E = 443.24
 e = 7.4%
 Runoff = 333
 Runout = 90

CURVE DATA - RAMP C

P. I. 46+61.56
 Δ = 58°43'38"Lt.
 C = 21°13'14"
 T = 151.91
 L = 276.75
 R = 270
 E = 39.80
 e = 8%
 Runoff = SEE DIAGRAM
 Runout = SEE DIAGRAM

CURVE DATA - RAMP D

P. I. 62+14.62
 Δ = 152°53'31"Rt.
 C = 33°42'12"
 T = 705.17
 L = 453.64
 R = 170
 E = 555.37
 e = 8%
 Runoff = SEE DIAGRAM
 Runout = SEE DIAGRAM



RT STA 3905+27.25
 END RAMP D
 BEG AUX LANE

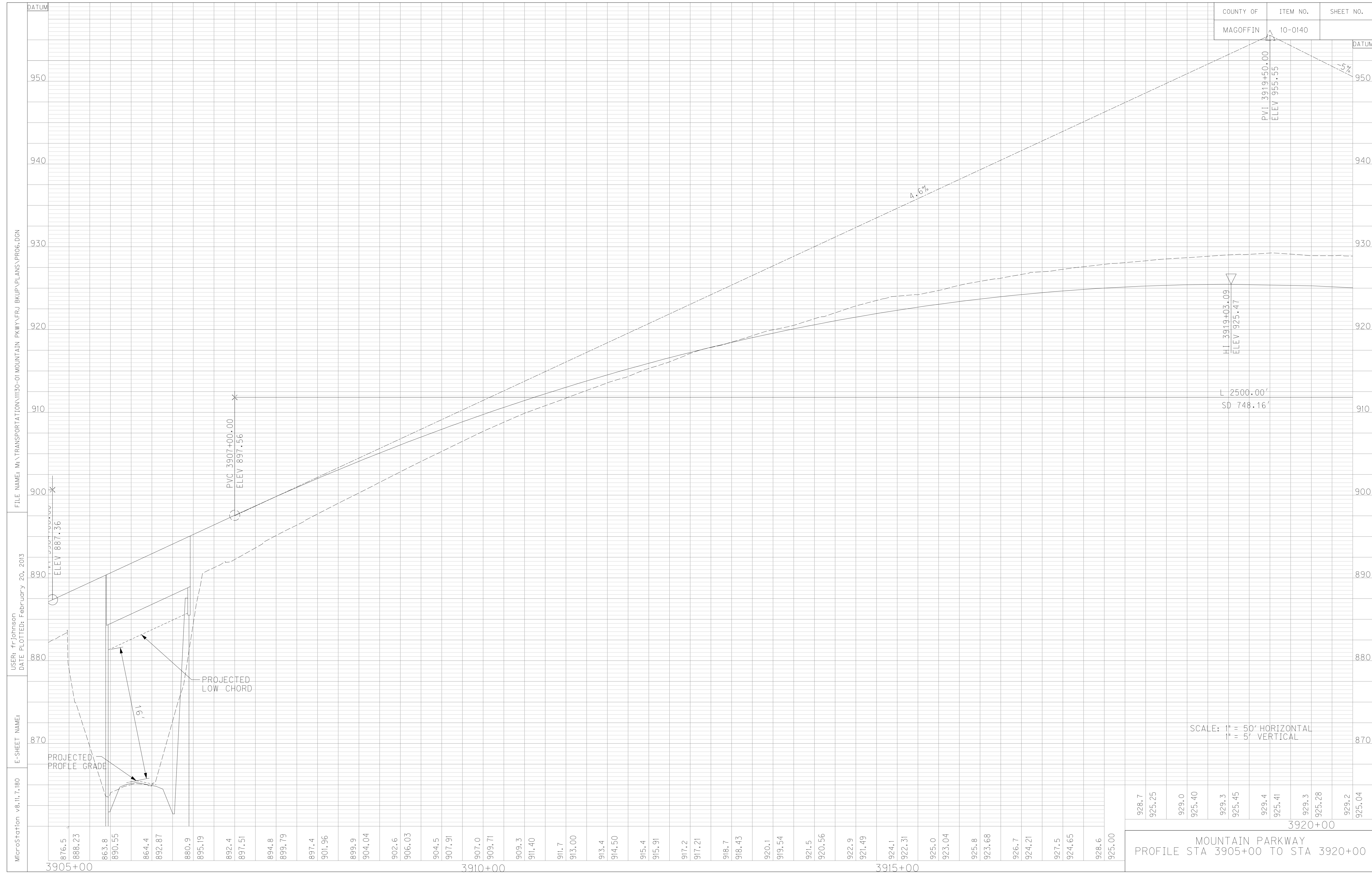
LT STA 3916+19.40
 END RAMP B
 LT STA 3916+19.40
 BEG 15:1 PVMT TAPER

SCALE: 1"=50'

MOUNTAIN PARKWAY
 PLAN STA 3905+00 TO STA 3920+00

FILE NAME: M:\TRANSPORTATION\10130-01 MOUNTAIN PKWY FRJ BKUP\PLANS\PLN6.DGN
 USER: frjohnson
 DATE PLOTTED: February 20, 2013
 E-SHEET NAME:
 MicroStation v8.11.7.180

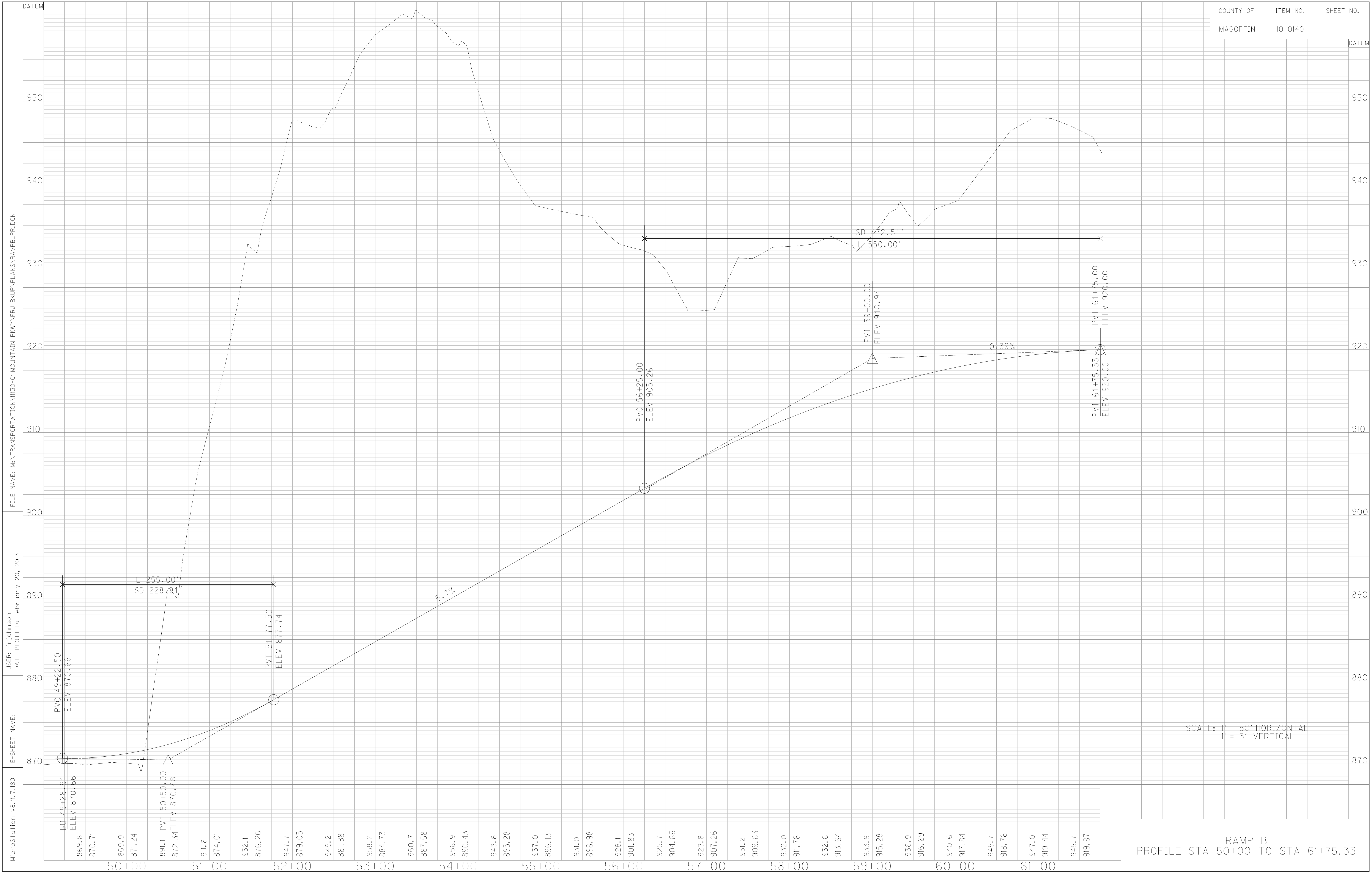
COUNTY OF	ITEM NO.	SHEET NO.
MAGOFFIN	10-0140	



MicroStation v8.11.7.180 E-SHEET NAME: USER: frjohnson DATE PLOTTED: February 20, 2013 FILE NAME: M:\TRANSPORTATION\10130-01 MOUNTAIN PKWY FRJ BKUP\PLANS\PROG.DGN

928.7	925.25	929.0	925.40	929.3	925.45	929.4	925.41	929.3	925.28	929.2	925.04
3920+00											
MOUNTAIN PARKWAY PROFILE STA 3905+00 TO STA 3920+00											

COUNTY OF	ITEM NO.	SHEET NO.
MAGOFFIN	10-0140	



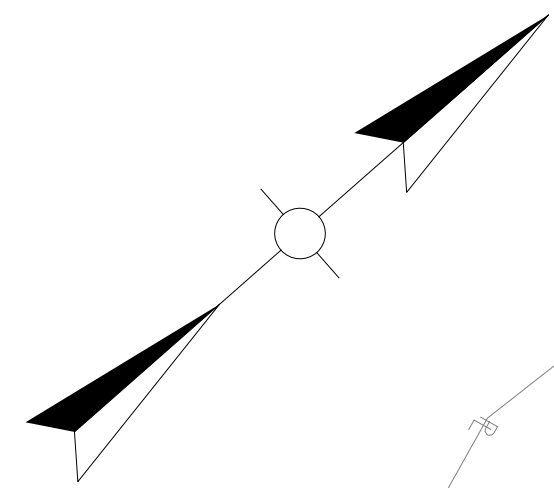
COUNTY OF	ITEM NO.	SHEET NO.
MAGOFFIN	10-0140	

LT STA 3921+71.88
END 15:1 PVMT TAPER

STA 3931+00
END BARRIER/CRASH CUSHION
BEG MEDIAN FILL

LT STA 3928+26.25
BEG PAINTED LINE LANE TAPER

LT&RT STA 3931+00
BEG PAINTED LINE MEDIAN TAPER



FILE NAME: M:\TRANSPORTATION\10130-01 MOUNTAIN PKWY FRJ BKUP\PLANS\PLINT.DGN

USER: frjohnson
DATE PLOTTED: February 20, 2013

E-SHEET NAME:

MicroStation v8.11.7.180



END CONST
STA 3933+60

RT STA 3923+04
END AUX LANE
BEG 25:1 PVMT TAPER

RT STA 3926+04
END 25:1 PVMT TAPER
BEG PAINTED LINE LANE TAPER

RT STA 3930+00
BEG CRASH CUSHION/BARRIER
FOR BRIDGE END PROTECTION

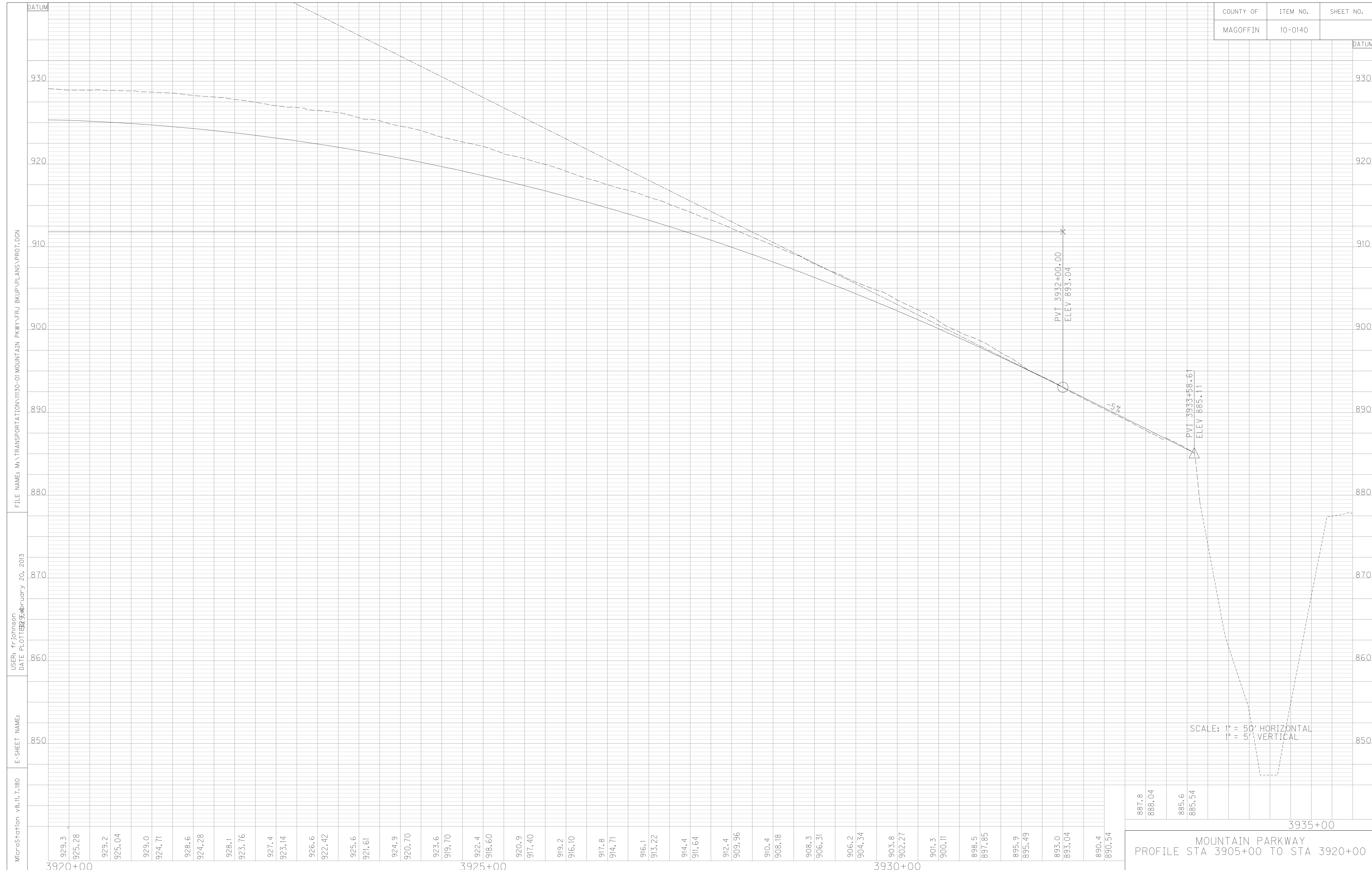
CURVE DATA
P. I. 3914+71.12
Δ = 66°03'06" L.
C = 2°29'28"
T = 1495.11
L = 2651.49
R = 2300
E = 443.24
e = 7.4%
Runoff = 333
Runout = 90

CURVE DATA
P. I. 3939+44.72
Δ = 81°13'46" R.
C = 5°48'50"
T = 845.12
L = 1397.17
R = 985.5
E = 312.75
e = 7.6%
Runoff = 275
Runout = 73
Design Speed = 50mph

SCALE: 1"=50'

MOUNTAIN PARKWAY
PLAN STA 3920+00 TO STA 3933+60

COUNTY OF	ITEM NO.	SHEET NO.
MAGOFFIN	10-0140	



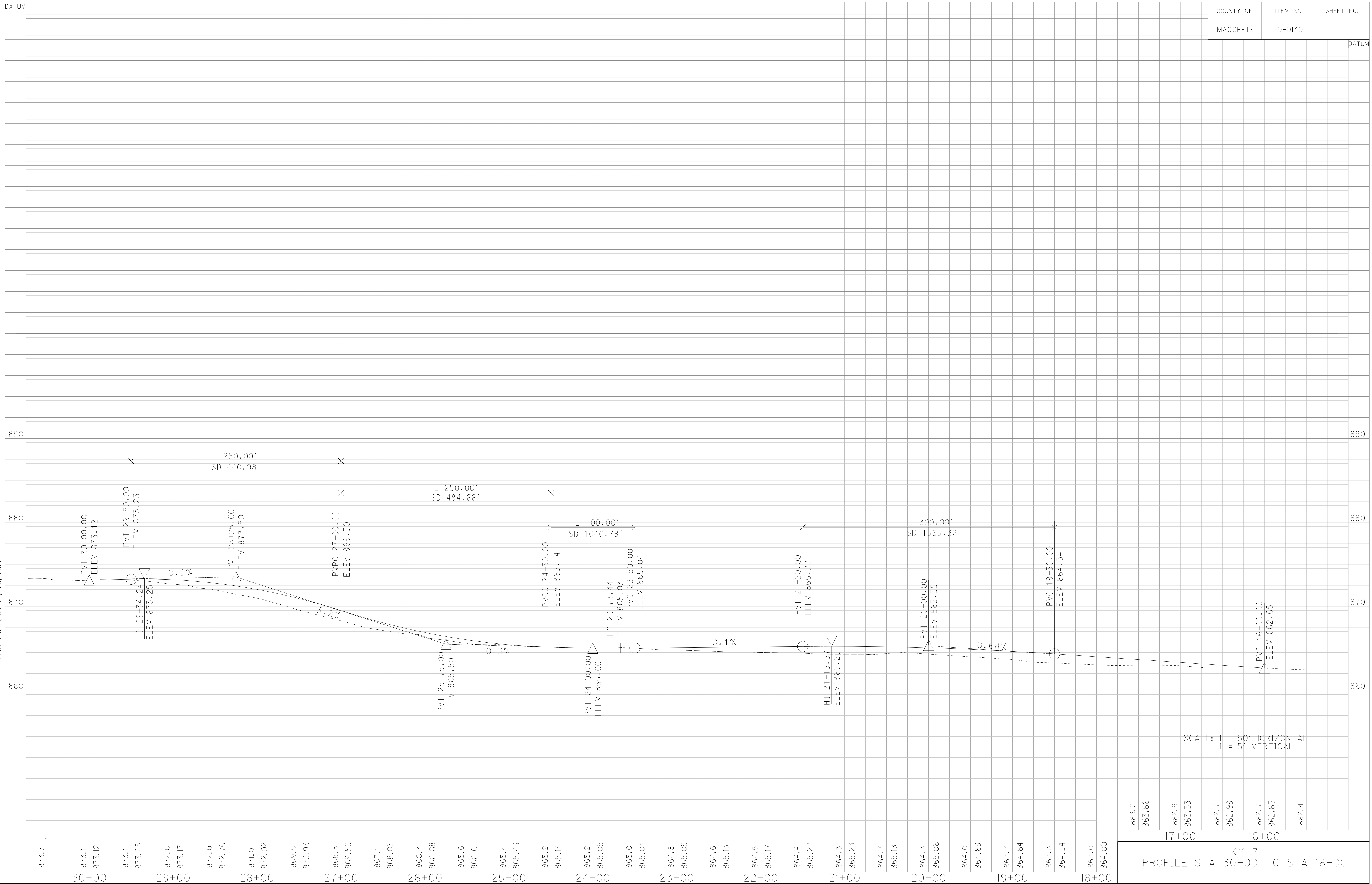
DATUM

FILE NAME: M:\TRANSPORTATION\1030-01 MOUNTAIN PKWY FRJ BKUP\PLANS\KY7PR.DGN

USER: frjohnson
DATE PLOTTED: February 20, 2013

E-SHEET NAME:

MicroStation v8.11.7.180



SCALE: 1" = 50' HORIZONTAL
1" = 5' VERTICAL

863.0	17+00
863.66	
862.9	
863.33	
862.7	
862.99	
862.7	16+00
862.65	
862.4	

KY 7
PROFILE STA 30+00 TO STA 16+00